

**GUJARAT INDUSTRIAL DEVELOPMENT CORPORATION**  
A Government of Gujarat Undertaking



# **BUILDING INDUSTRIAL ECOSYSTEM**

**Gujarat Industrial Development Corporation**  
Industries & Mines Department  
Government of Gujarat

# Content

Gujarat - an  
Industrial Hub

01

02

Enabling Infrastructure  
of Gujarat

GIDC at Glance

03

04

Existing GIDC Estates

Upcoming GIDC Estates

05

06

Smart GIDC Estates

Infrastructure

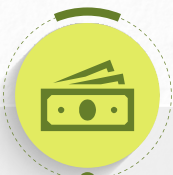
07

08

Investor Guide



# Gujarat - an Industrial Hub



8.2% of India's GDP  
State GDP ~USD 303 Billion



3.9 Million+ Udyam  
registered MSMEs across the value chain



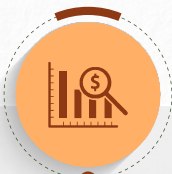
~27% of India's  
Total Exports



34.6% share of  
Manufacturing Sector  
in State's Gross Value Added (FY 2023-24)



~17.2% of India's  
Industrial Output and 12.81%  
of India's Factories  
(FY2023-24)



Cumulative FDI of  
USD 69.9 Billion  
(From April 2000 to March 2025)



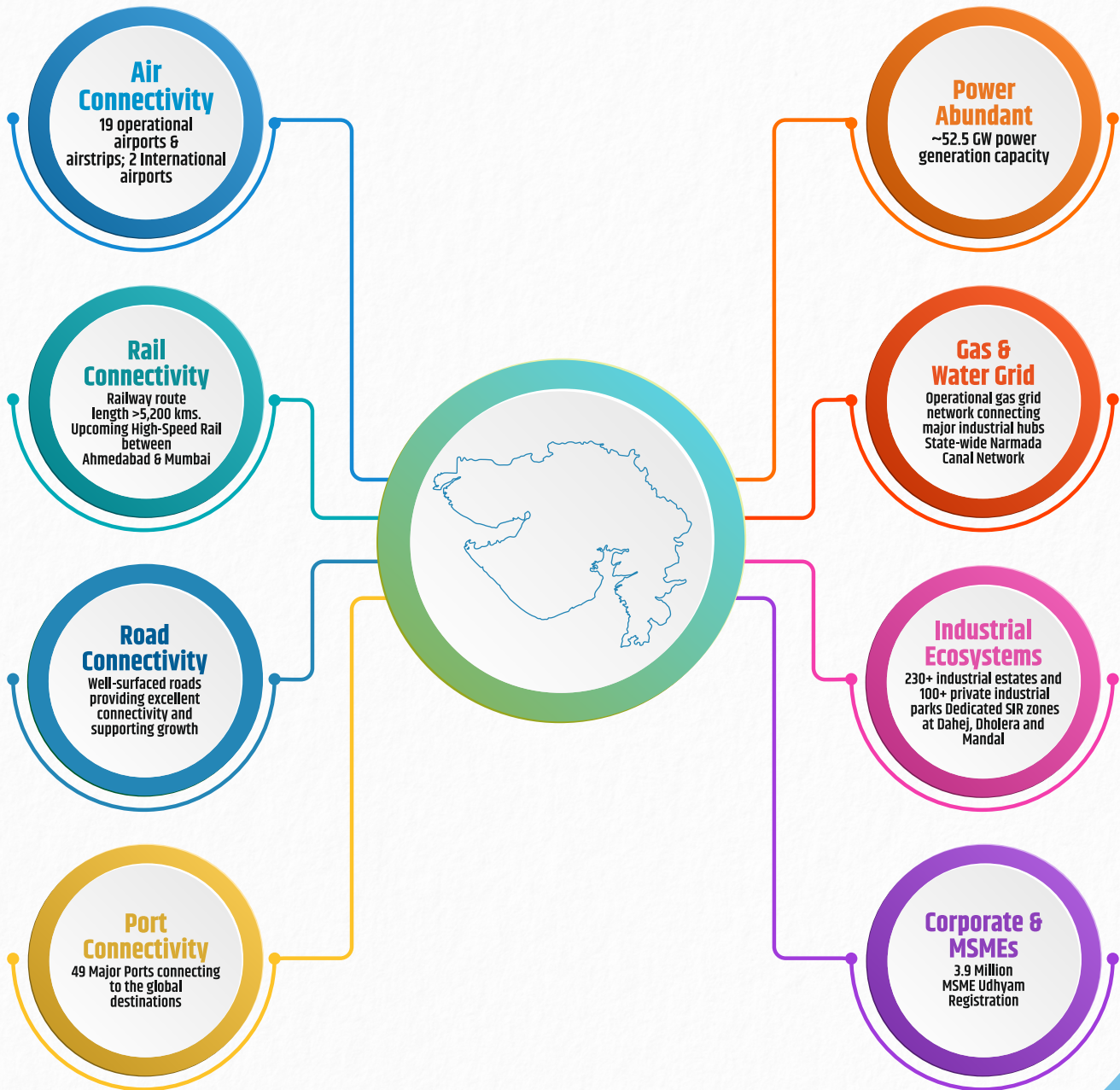
Policy Driven State with  
Sector Specific Policies







# Enabling Infrastructure in Gujarat







# GIDC at Glance



Gujarat Industrial Development Corporation (GIDC) is a **nodal agency for industrial growth within the Gujarat State** and established under the Gujarat Industrial Development Act of 1962.

## Land Identification

Foresees Industrial Demand and identifies suitable locations of land & aggregates them as per requirement

## Land Allotment

Land Allotment through online process for lease of 99 years

## Infrastructure Development

Develops Industries appropriate Infrastructure

## Post Allotment Services

Provide various Post Allotment services to ensure Efficient Industry Operations

Inventory of  
**239**

Industrial Estates across  
32 districts of Gujarat

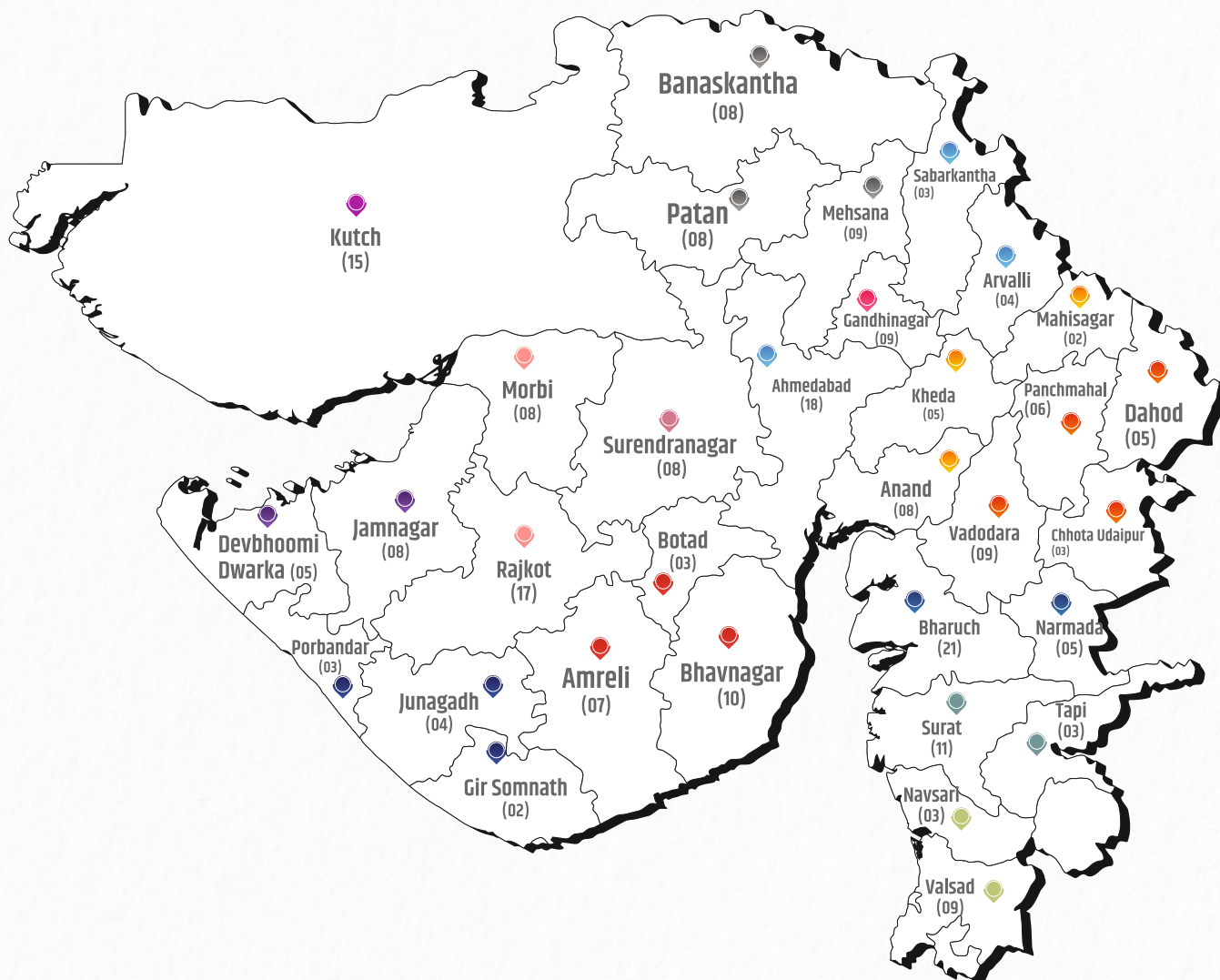
**98,000**  
acres+  
Land Inventory  
spread across  
the state

Presence of  
**70,000+**  
units among the  
GIDC Industrial  
Estates





# Existing GIDC Estates



Region	Legend	Total Estate
Ahmedabad I & II		25
Bhavnagar		20
V.U Nagar		15
Mehsana		25
Ankleshwar		26
Vadodara		23
Jamnagar		13

Region	Legend	Total Estate
Gandhinagar		09
Junagadh		09
Kutch		15
Rajkot		25
Vapi		12
Surat		14
Surendranagar		08

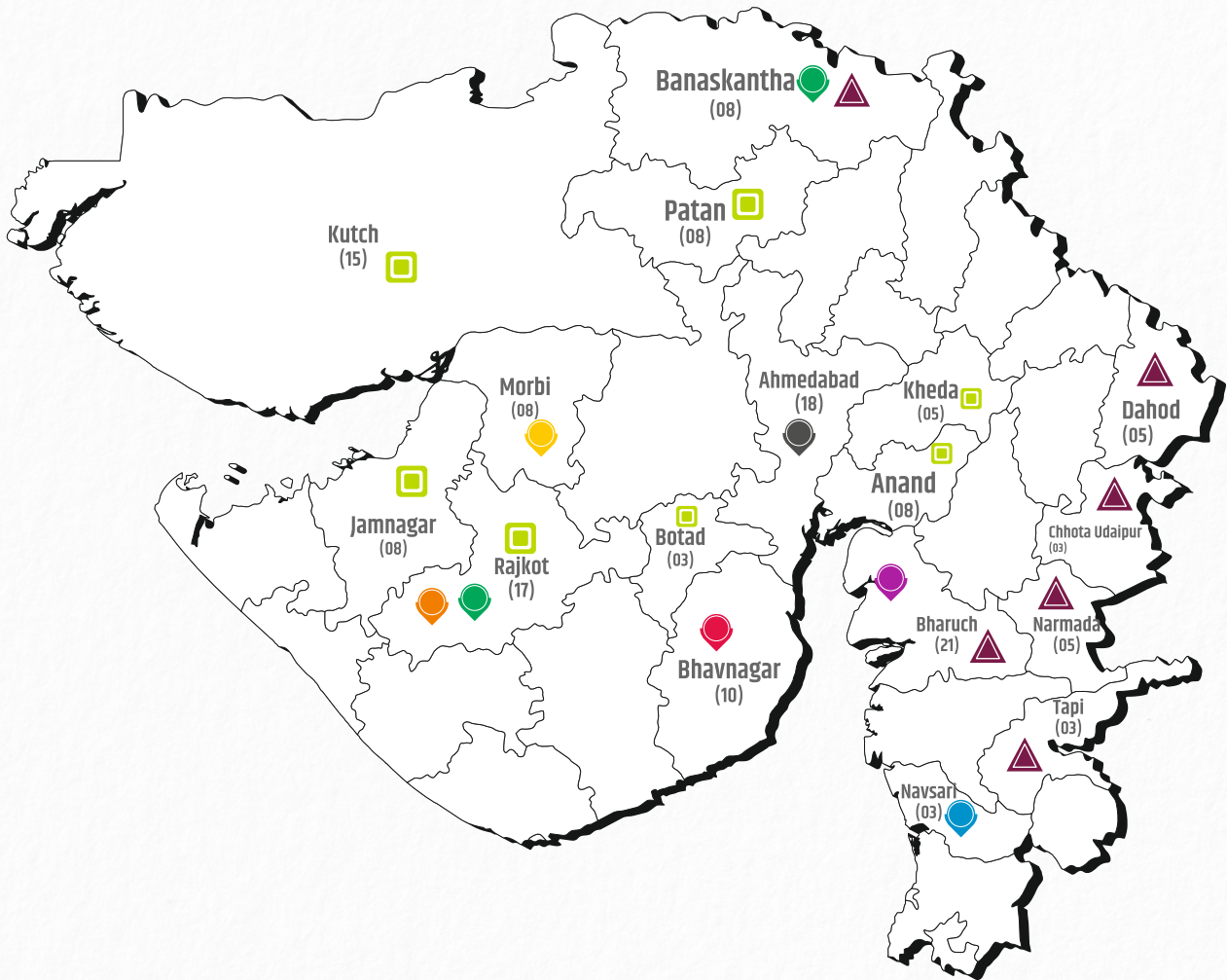
Total	239
-------	-----

Note: Locations are marked approximately





# Upcoming GIDC Estates



## Sector Specific Industrial Estates

**Textile Park**  
(Vansi, Navsari)



**Bulk Drug Park**  
(Jambusar, Bharuch)



**Medical Device Park**  
(Nagarpur, Rajkot)



**Ceramic Park**  
(Jambudiya Paneli, Morbi)



**Vehicle Scrappage Park**  
(Nava Madhiya, Bhavnagar)



**Agro Food Parks**  
(Mudetha, Banaskantha & Chhapra, Rajkot)



**Electronics Manufacturing Cluster**  
(Sanand, Ahmedabad)



## General Industrial Estates

### General Industrial Estates

(Bhadreshwar, Kutch)  
(Khirasara-2, Rajkot)  
(Anandpar-Pipardi, Rajkot)  
(Sekhpat, Jamanagar)  
(Kaniyad, Botad)  
(Ode, Anand)  
(Lanva, Patan)  
(Nadiad-2, Kheda)



## Industrial Estates in Tribal Area

### Industrial Estates in Tribal Area

(Amirgadh, Banaskantha)  
(Tilakwada, Narmada)  
(Dondwada, Bharuch)  
(Vanar, Chhota Udepur)  
(Nizar, Tapi)  
(Chakaliya, Dahod)

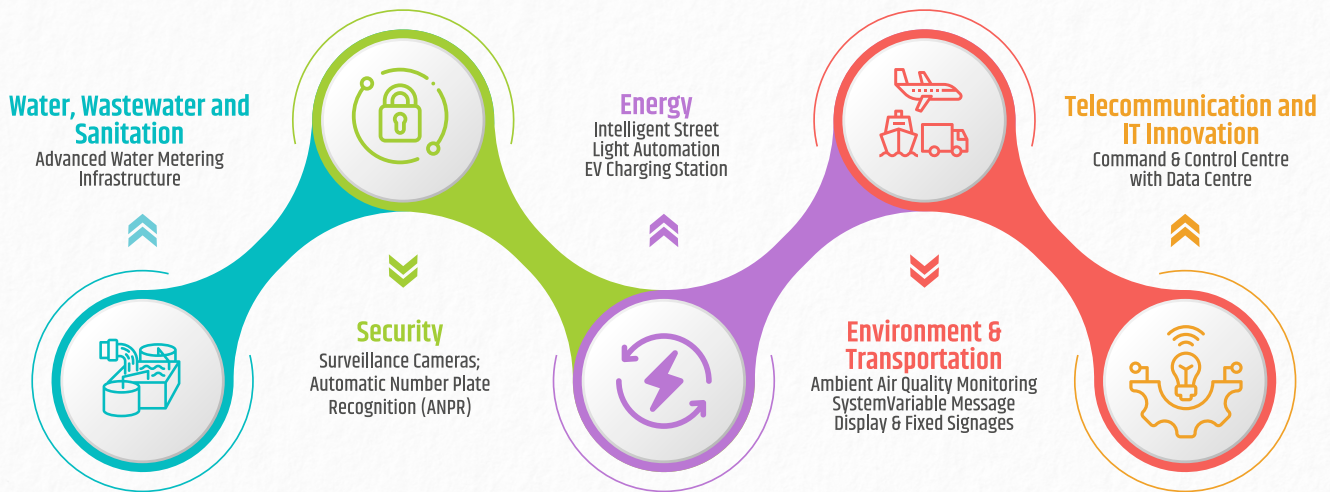
Note: Locations are marked approximately



# Smart Industrial Estates



## Transforming Smart **GIDC** Estates to Estates...



GIDC has transformed **Sanand GIDC** into a cutting edge **Smart Industrial Park**.

Another four GIDC estates — Dahej, Khoraj, Halol, and Bhagapura - are being considered for similar transformation into **Smart Industrial Parks**.



EV Charging Stations



Sanand Industrial Estate Office building



Command Control Center



LED Display Signages



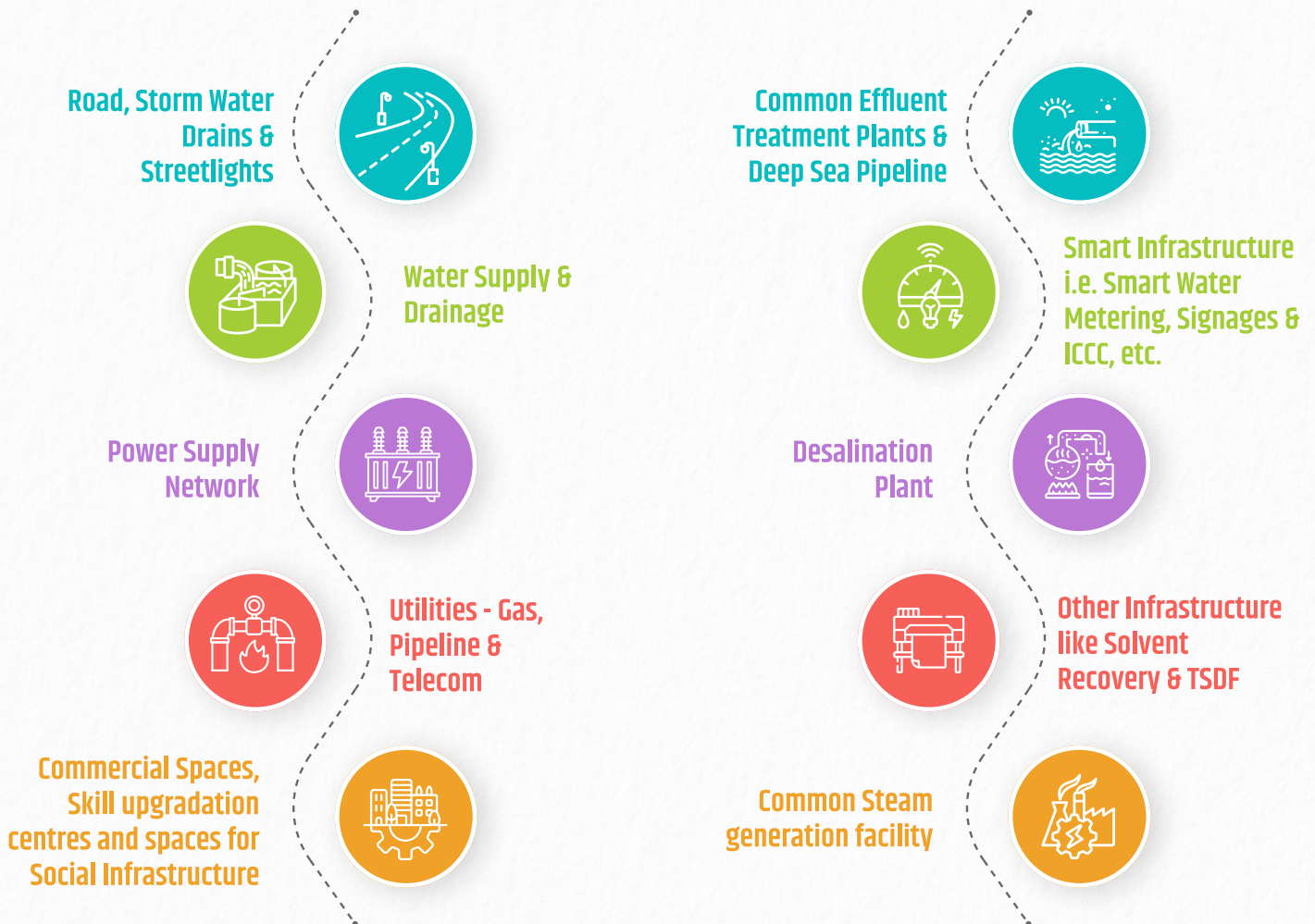


# Infrastructure



## Core & Support Infrastructure

## Specialized Infrastructure



Common Effluent Treatment Plant



Desalination Plant



Effluent Disposal Pipeline



Power Infrastructure



Intake wells





## Facilitation for Industries

Industries may reach out for queries / issues / land and infrastructure related inquiries, etc.

[ipdesk@gidcgujarat.org](mailto:ipdesk@gidcgujarat.org)

[japandesk@gidcgujarat.org](mailto:japandesk@gidcgujarat.org)

[taiwandesk@gidcgujarat.org](mailto:taiwandesk@gidcgujarat.org)



## Application Procedures



Timeline : **30 Days** (From date of acceptance of application)

### Pre-Allotment Services

[ifp.gujarat.gov.in](http://ifp.gujarat.gov.in)

Land Allotment

Plan Approval

Water Connection

Drainage Connection

Plinth Check Building Completion

### Post-Allotment Services

[gidc.gujarat.gov.in](http://gidc.gujarat.gov.in)

2<sup>nd</sup> permission

Lease Deed

Time limit extension

Sublet

Surrender

Transfer

Subdivision

Amalgamation

RoU





# Industries in GIDC



**Coca-Cola**

**Nestlé**

**GOPAL**  
NAMKEEN

**RALLIS INDIA LIMITED**  
A TATA Enterprise

**TONG GARDEN**

**VOLTAS**

**safari**

**COLGATE-PALMOLIVE**

**Topre**

**NIVEA**

**adani**

**IFFCO**

**GNFC**

**GAIL**

**G**  
GUJARATI FERTILIZERS  
CHEMICALS LIMITED

**Micron**

**KAYNES SEMICON**

**WELSPUN**

**KEI**  
Wires & Cables

**Air Liquide**  
creative oxygen

**Reliance**  
Industries Limited

**P&G**

**MADHU SILICA**

**MORESCO**  
MORESCO Corporation

**HINDALCO**

**asianpaints**

**KANSAI PAINT**  
**NEROLAC**

**Pidilite**

**JCB**

**BASF**  
We create chemistry

**Hero**

**MG**

**BOSCH**

**DANA**

**MITSUBISHI**

**Emcure**  
SUCCESS THROUGH INNOVATION

**UPL**

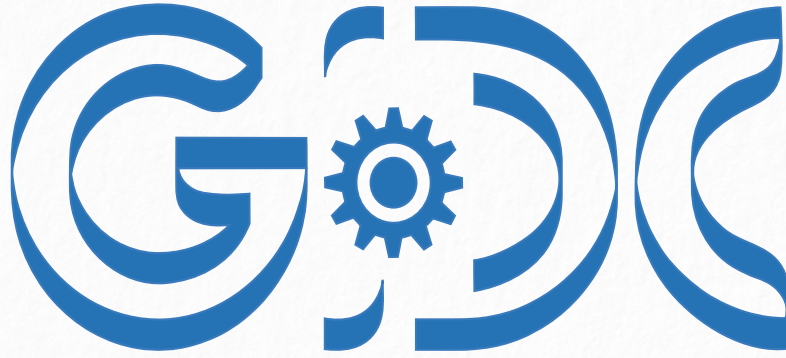
**GACL**  
Promoting Green Technology

**CRODA**  
SMART SCHOOLS TO IMPROVE LIVES

**Abbott**

And many more...





**GUJARAT INDUSTRIAL DEVELOPMENT CORPORATION**  
A Government of Gujarat Undertaking

**Industries & Mines Department**  
Government of Gujarat

Block 3,4,5, Udhog Bhavan, Sector-11,  
Gandhinagar 382 011, Gujarat, India.  
GIDC Office: 23250636 / 23250637

**Website:** <https://gidc.gujarat.gov.in/>